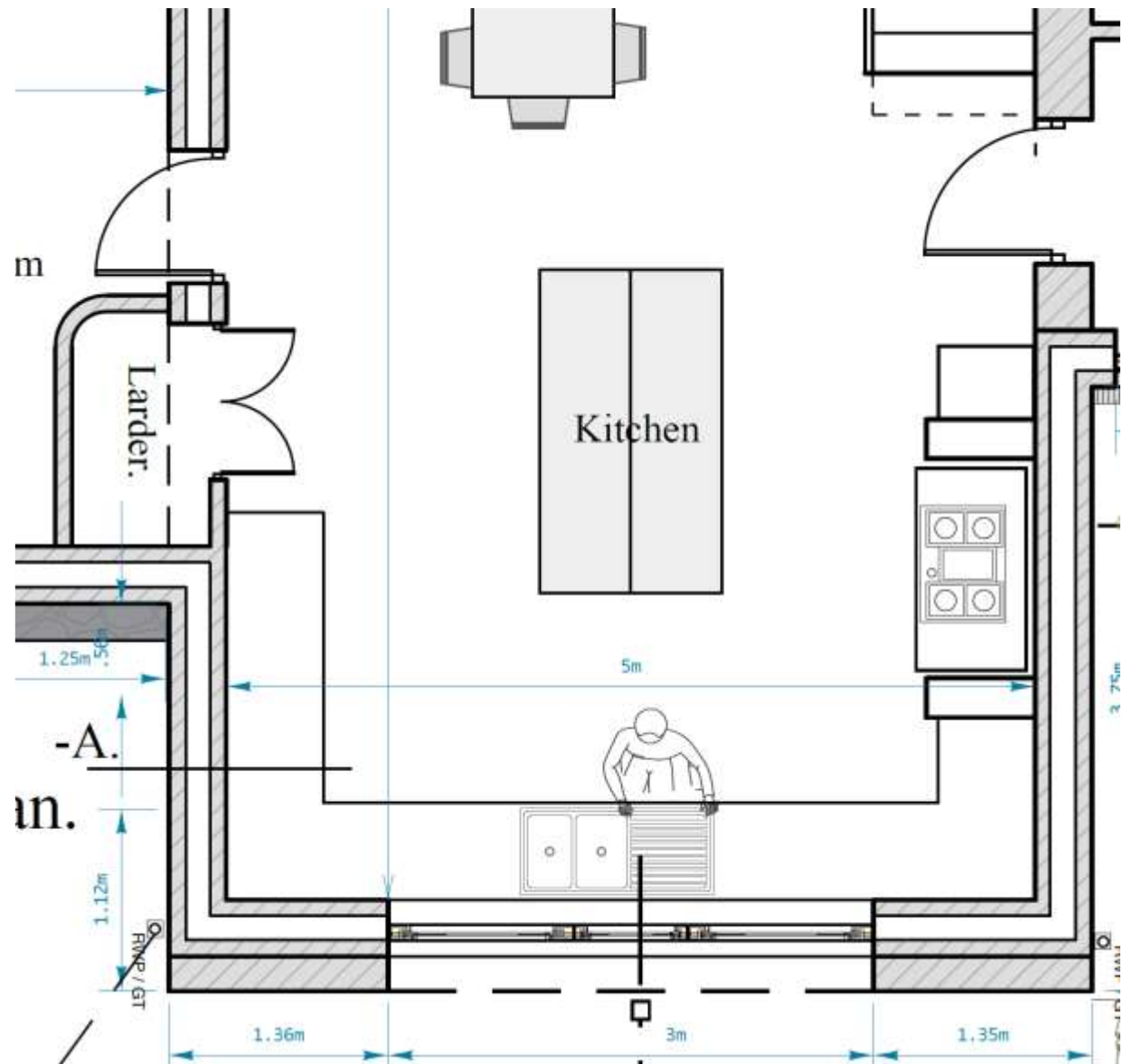
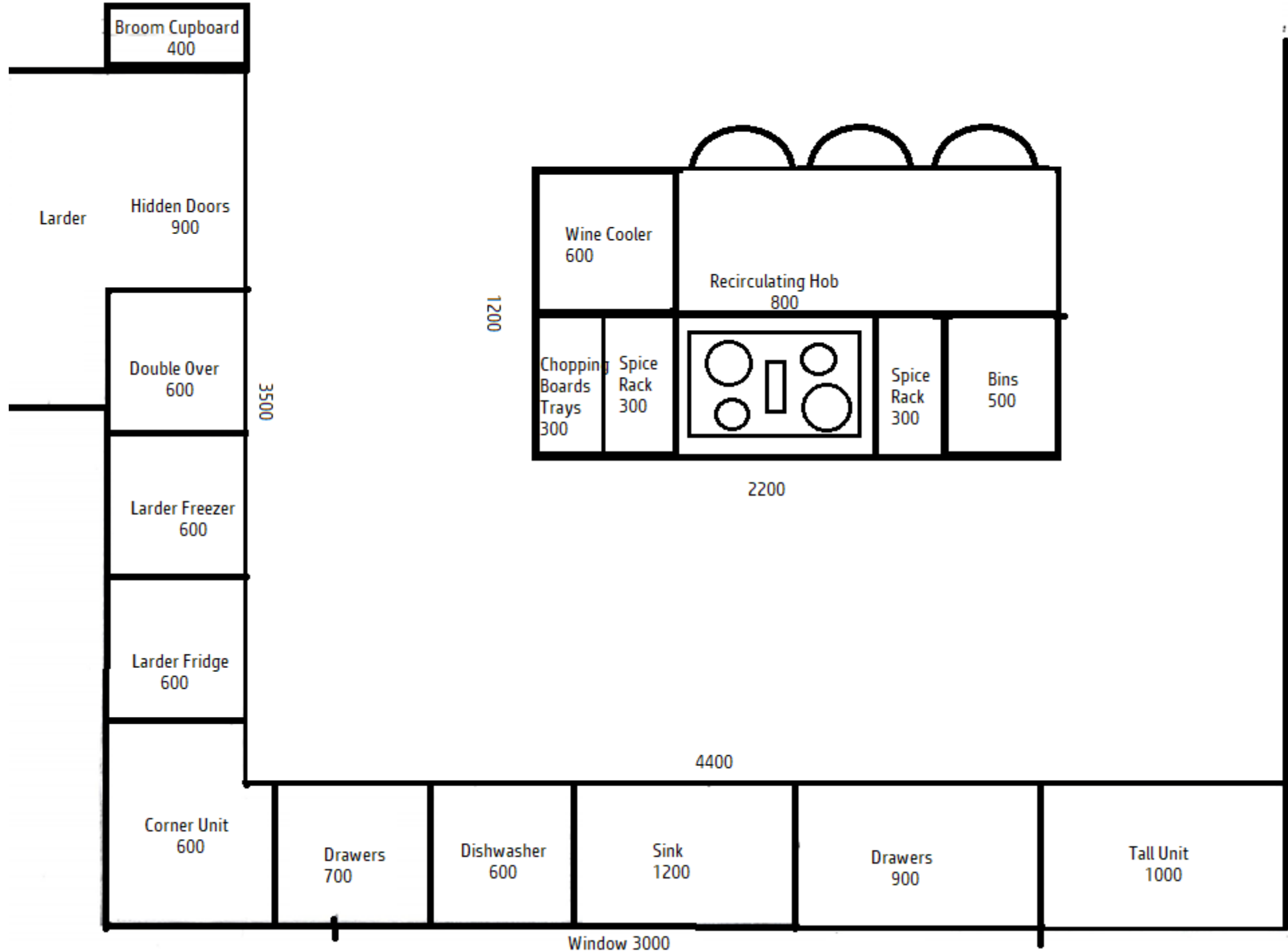


# Kitchen Plans and Inspiration

Shauna Carroll & Declan Phelan

Ralish, Abbeyleix, Laois



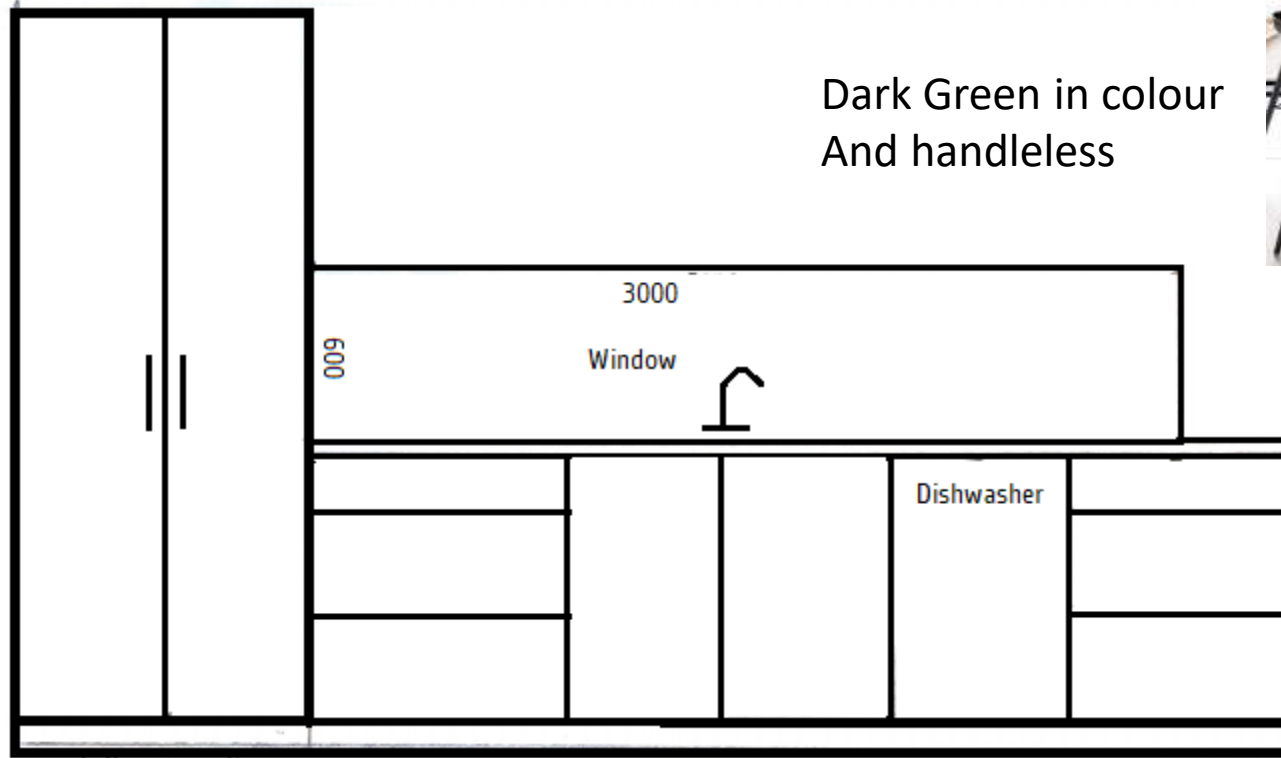




Run countertop under appliances i.e toaster, coffee machine etc. And a pull out butcher block



Dark Green in colour  
And handleless



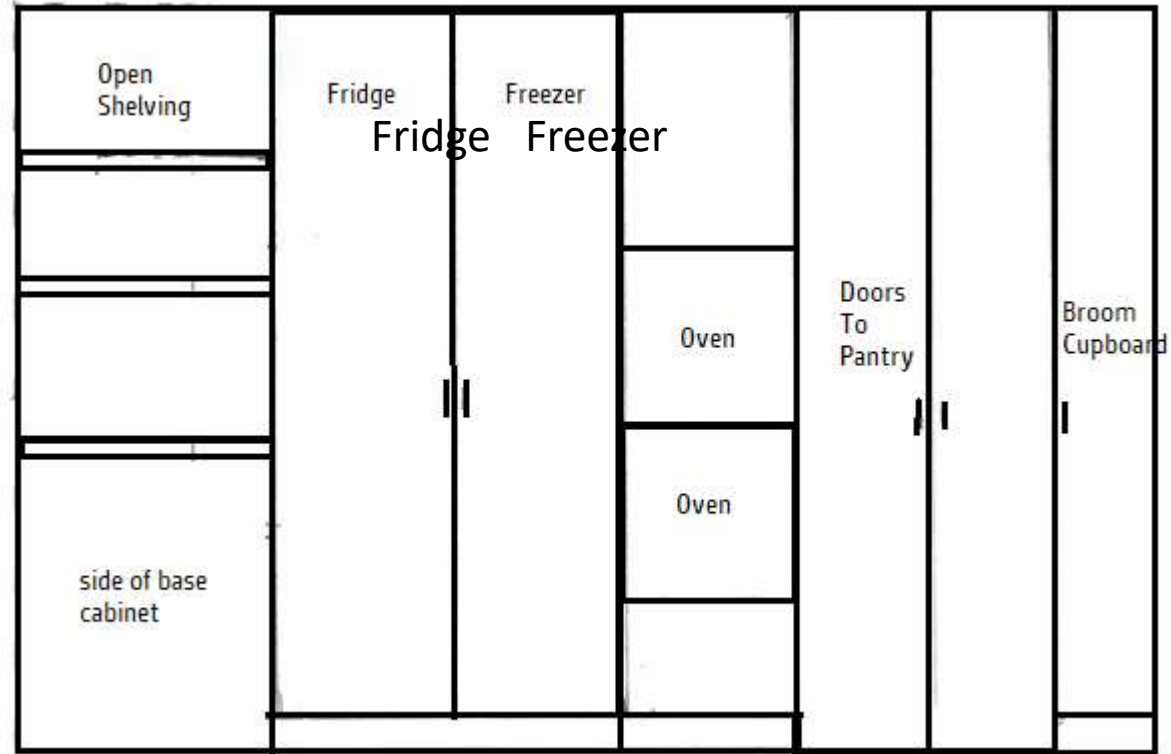
2 full length doors with half shelving half drawers / baskets

Window to act as splash back surrounded by cabinets





Stacked double oven



Open corner Shelving

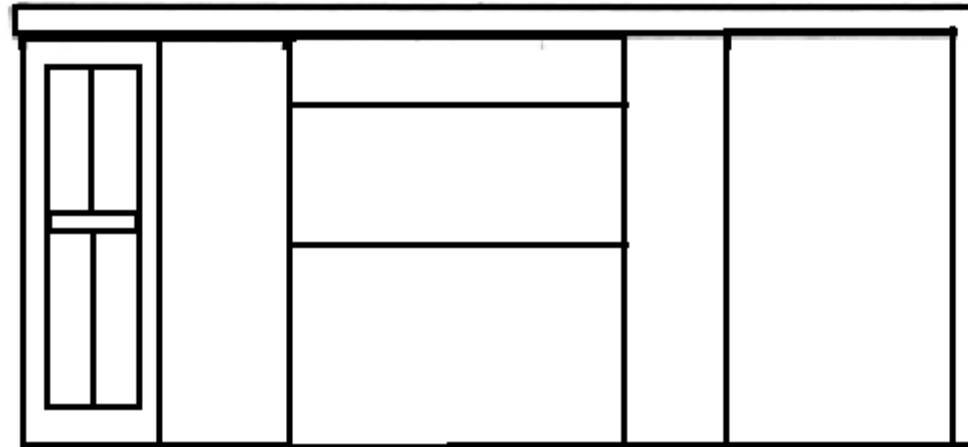
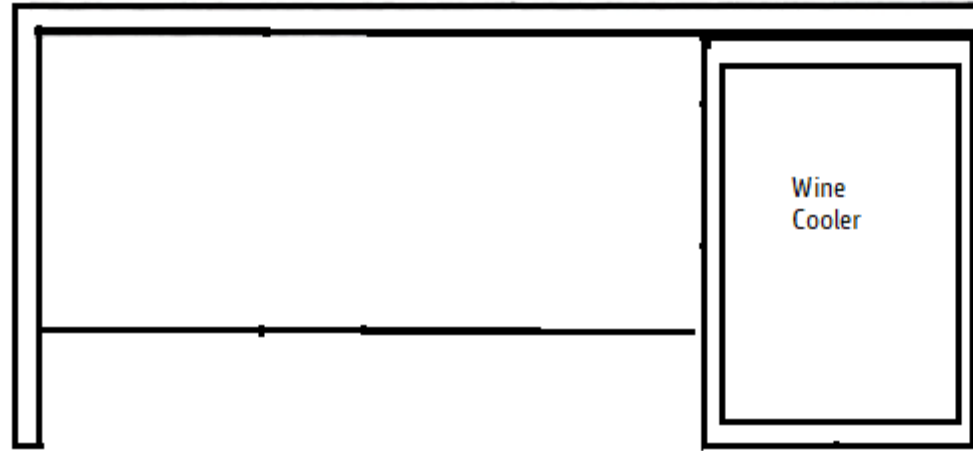


Hidden walk in larder





Recirculating downdraft  
hob on island with pull  
out racks either side



Waterfall  
Edge



# Overall Idea



# Notes

- We love the look of a dark (probably green but also like navy) handleless kitchen with white stone worktop.
- We like to have the worktops clear so want plenty of storage
- We like the seamless look so want all big appliances integrated
- Its part of an open plan living area so want it to be able to function as a kitchen but also socially etc.
- If you have any other questions please don't hesitate to contact us.

THANKS